



CHARGEPOINT NETWORKED CHARGING STATION INSTALLATION OPTIONS

Both the CT1000 and CT2000 ChargePoint Networked Charging Stations are available in three mounting configurations:

BOLLARD



POLE MOUNT



WALL MOUNT

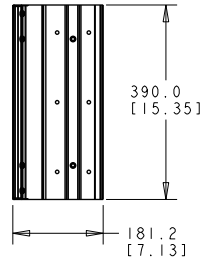
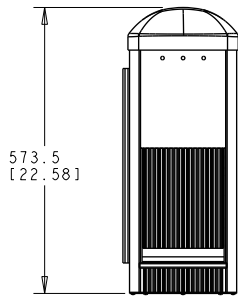
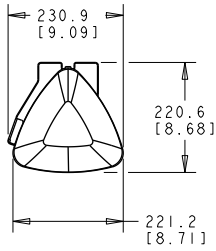


	CT1000 FAMILY	PRELIMINARY SPECIFICATIONS CT2000 FAMILY
Charging Connection	NEMA 5-20	NEMA 5-20 and SAE J1772™ Document (plug on 5m cable)
AC Charging Power Output	1.9kW (120V @ 16A) Level 1	7.2kW (240V @ 30A) - Level 2 and 1.9kW (120V @ 16A) - Level 1
AC Power Input; Connections	120V 16A Single Phase; Line, Neutral, and Earth	208/240V 30A; Line1, Line2 and 120V 16A; Line, Neutral, Earth (5 wire)
Recommended Service Panel Breaker	20A breaker on dedicated circuit	40A dual breaker and 20A single breaker on dedicated circuits
Recommended Service Panel GFCI	None. Do not provide GFCI at service panel as it can conflict with integral GFCI.	
Integral Hardware GFCI	5mA CCID with self test and auto retry (15 min delay, 3 tries)	Level 2, 20mA and Level 1, 5mA CCID with self test and auto retry (15 min delay, 3 tries)
Automatic Plug-Out Detection	Programmable arm and trip current thresholds (patent pending)	
Power Measurement	1% @ 5 min interval; ANSI C12 capable (special order)	
Local Area Network	2.4GHz 802.15.4 dynamic mesh network	
Wide Area Network	Commercial CDMA or GPRS cellular data network	
Network Communication Protocol	TCP/IP	
Network Security	HTTPS; 128-bit AES Encryption	
Maximum Charging Stations per 802.15.4 Radio Group	100 Each charging station must be within 150 feet of at least one other station	
Smart Card Reader	ISO 15693 compliant	
Standby Power	5W typ.	
Outdoor Rated	NEMA 3R per NEMA 250-1997	
Safety Compliance	NRTL Tested; GFCI per UL 2231-1 and -2; Meets UL 2202; NEC Article 625 Compliant	
Surge Protection	6kV @ 3,000A In geographic areas subject to frequent thunder storms, supplemental surge protection at the service panel is recommended.	
EMI Compliance	FCC Part 15 Level A	
Operating Temperature	-30°C to +50°C	
Operating Humidity	Up to 95%	
Voltage and Current Rating	120VAC @ 16A	208/240VAC @ 30A and 120VAC @ 16A
Terminal Block Temperature Rating	100°C	
Approximate Shipping Weights	Bollard (CT1001) 50lb / 23kg Pole Mount (CT1002) 30lb / 14kg Wall Mount (CT1003) 33lb / 15kg	Bollard (CT2001) 60lb / 27kg Pole Mount (CT2002) 40lb / 19kg Wall Mount (CT2003) 43lb / 20kg

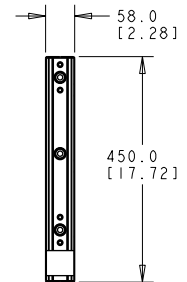
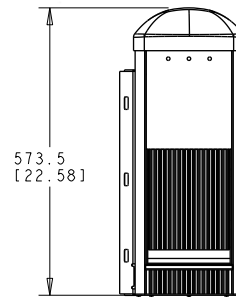
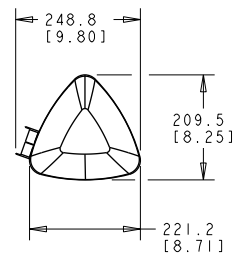


MECHANICAL DRAWINGS CT1000 FAMILY

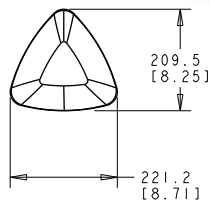
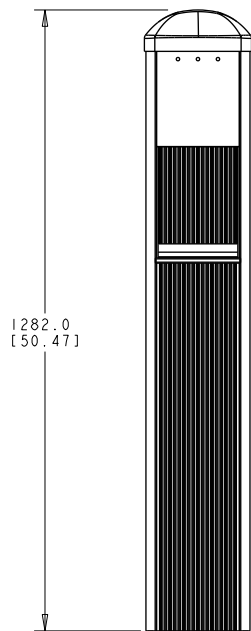
WALL MOUNT (CT1003)



POLE MOUNT (CT1002)



BOLLARD (CT1001)



Coulomb Technologies reserves the right to alter product offerings and specifications at any time without notice, and is not responsible for typographical or graphical errors that may appear in this document.